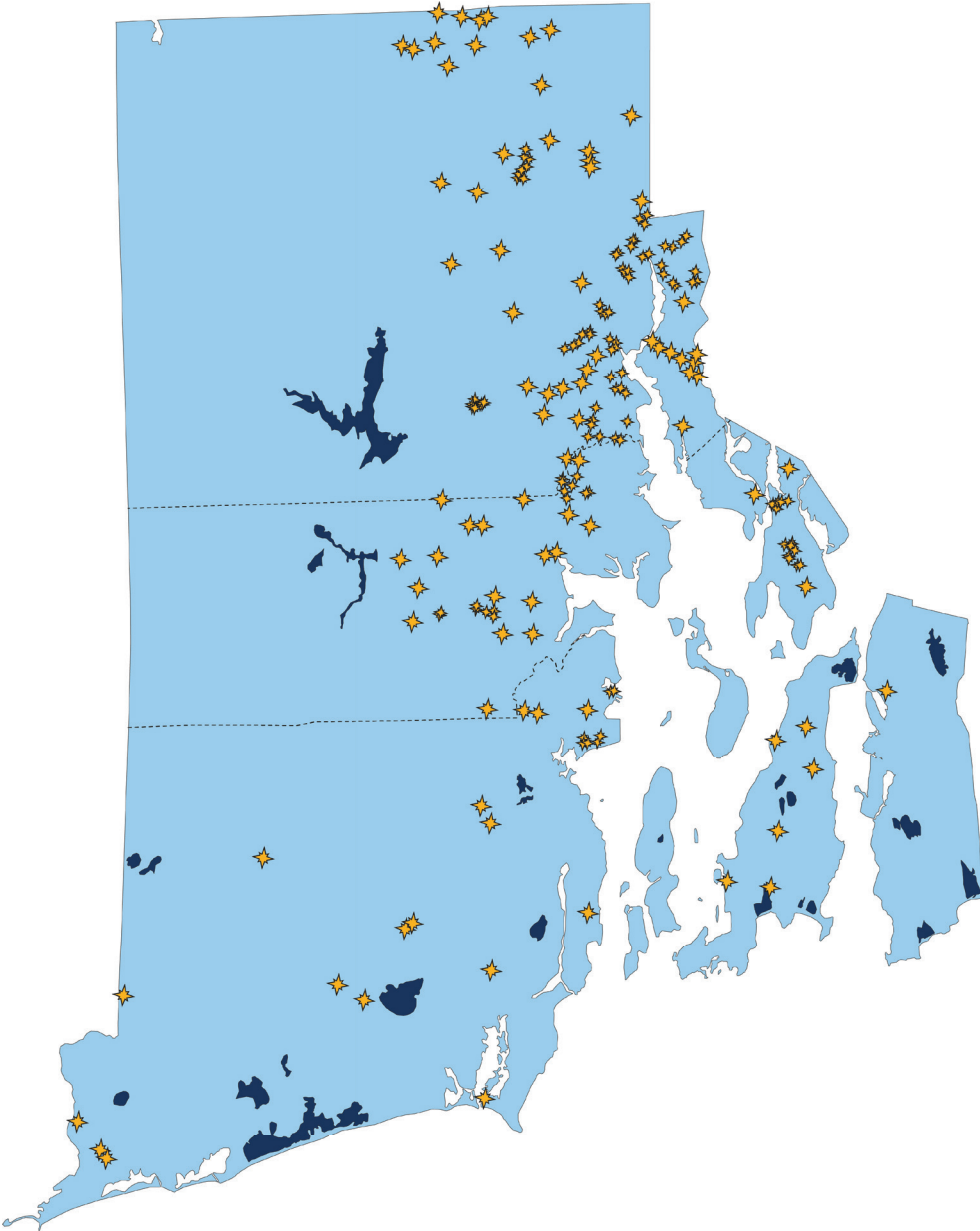


SERVING MANUFACTURERS  
ACROSS RHODE ISLAND



WHO IS POLARIS MEP?

Polaris MEP has earned the trust of RI's manufacturers through the delivery of:

- Growth & Strategy Services
- Workforce Development
- Lean Manufacturing Training and Implementation
- Quality Management Systems Development, Certification and Improvement
- Intelligent Facility Layout
- Cybersecurity
- Technology Acceleration
- Public Workshops, Customized Training

We took a leadership role in establishing the New England Regional Defense Industry Collaboration and expanded the knowledge of advanced manufacturing within Rhode Island.

Polaris MEP is a non-profit partnership between the federal and state government, public and private entities. We are an affiliate of the National Institute of Standards and Technology's Hollings Manufacturing Extension Partnership (NIST MEP), and a business unit of the University of Rhode Island Research Foundation.



Polaris MEP  
315 Iron Horse Way  
Providence, RI 02908  
401-270-8896  
info@polarismep.org  
polarismep.org



ANNUAL REPORT 2021  
MOVING RHODE ISLAND MANUFACTURERS FORWARD

Economic Impact FY 2021

Clients report a measurable impact from Polaris MEP's services

	<b>\$121.5m</b> total increased or retained sales
	<b>\$10.4m</b> new client investments
	<b>\$4.4m</b> in cost savings
	<b>1,628</b> jobs added or maintained





## ABOUT THIS REPORT

Partnering with clients and a variety of public/private agencies, in fiscal year 2021 Polaris MEP kept more than 1500 Rhode Islanders at

good jobs with  
good wages,  
making what matters.

For nearly a decade Polaris MEP has served as the local affiliate of the national Hollings Manufacturing Extension Partnership (MEP) network.

This year, more than ever, we

- Connected local businesses to national opportunities and resources
- Equipped Ocean State manufacturing employers to meet the twin challenges of COVID and a global supply chain crunch
- Expanded and collaborated with regional networks to support RI manufacturers

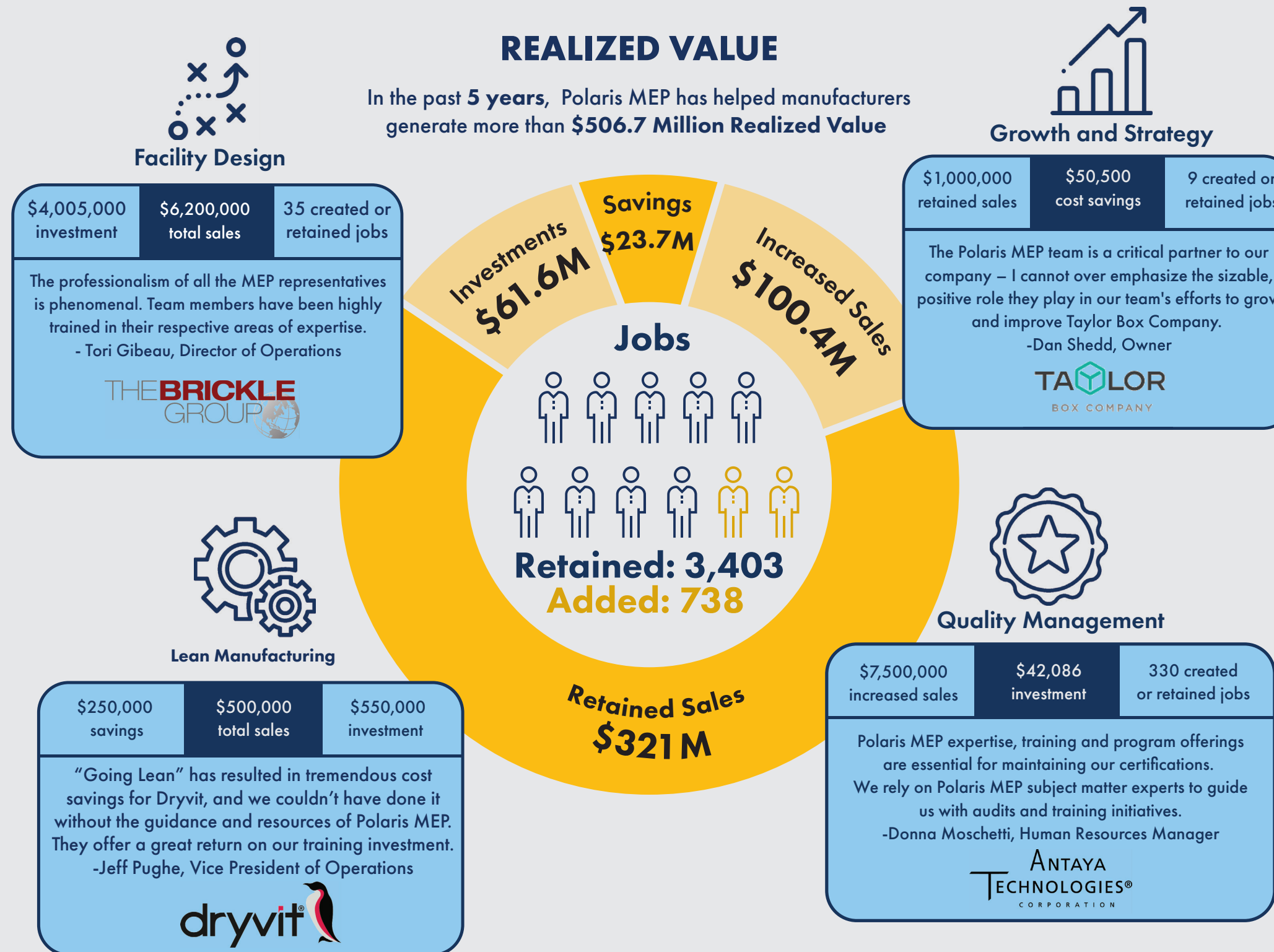
Each quarter, independent third-party surveys of clients certify the economic impact of our solutions.

This annual IMPACT report summarizes the positive outcomes reported by clients served in FY 2021.

Please visit [PolarisMEP.org/2021IMPACT](https://PolarisMEP.org/2021IMPACT) for more.



**On average, an MEP Center has a 13 to 1 return for every client investment**



## ONGOING COVID RESPONSE – FY 2021

### Workforce

- 165 previously unemployed placed in manufacturing jobs by Polaris MEP / Rhode Island Marine Trades Association
- 75 companies hiring/training workers with Machine & Marine grants

### Test Kit Pilot

- Tapped by RI Department of Health to pilot program supplying COVID test kits to businesses
- After proving successful with manufacturing sector, program expanded to all RI entities

### Tools

- >2,000 views of COVID guidance videos, blog posts, forms
- 218 downloads of the COVID-19 Manufacturing Readiness "Playbook"
- 5 manufacturing companies in Reshoring pilot
- 15 matches made through MEP National Network "Supplier Scouting"

### Safety/EcoSystem Support

- 2 webinars with Department of Health
- 3 webinars / events on vaccines, OSHA standards
- 64 COVID safety assessments

